

# AUCTION

**ABSOLUTE  
ESTATE**

**ESTATE OF  
DONALD BURRIS and the  
LATE MARGARET BURRIS**

**PROPERTY at 2 LOCATIONS**

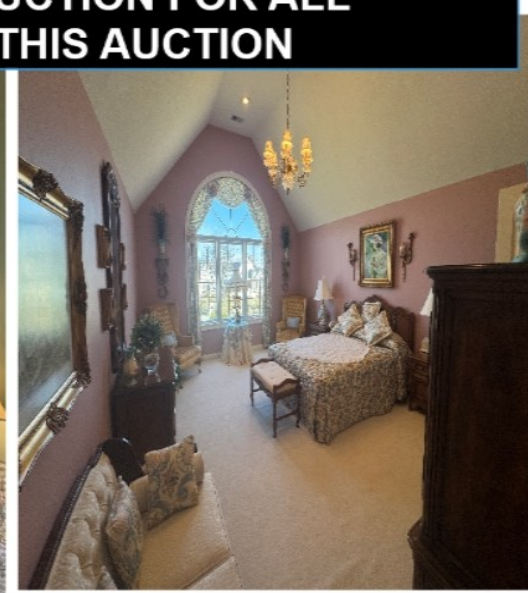
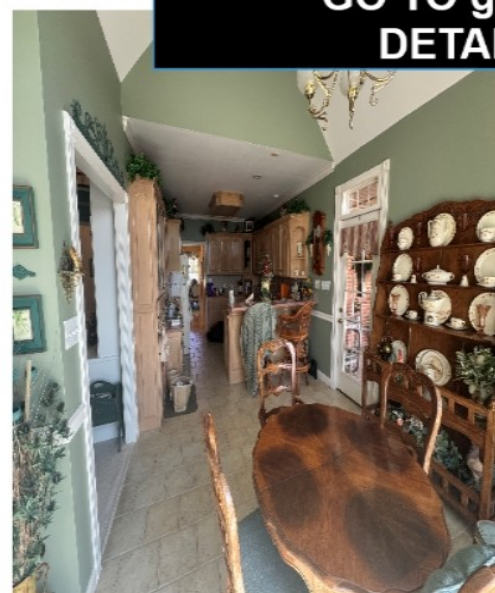
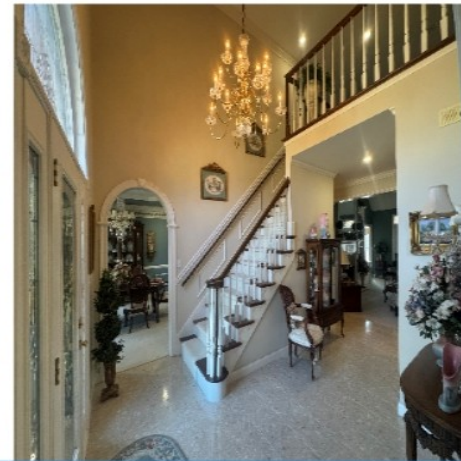
**ENDS MARCH 31ST 1:00PM**

**ONLINE ONLY AUCTION**

THIS PERSONAL PROPERTY IS THE CONTENTS OF A 7,000 SQ FT HOUSE. THERE ARE OVER 500 LOTS! GO TO [godbyrealty.com](http://godbyrealty.com) AND CLICK ON THIS AUCTION FOR THE COMPLETE CATALOG AND PICTURES OF EACH LOT. LOT #s 1000-1999 ARE LOCATED AT 147 WAITSBORO DRIVE SOMERSET - LOT #s 2000+ ARE LOCATED AT GODBY AUCTION CENTER 207 S RICHARDSON DRIVE SOMERSET.

INSPECTION / PREVIEW AT BOTH LOCATIONS ON MARCH 28TH 9:00AM TO 3:00PM, AND AGAIN ON MARCH 31ST 9:00AM TO SALE END TIME.

PAYMENT IS AT GODBY REALTY & AUCTION OFFICE, AND PICKUP AFTER PAYMENT ON APRIL 1ST AND APRIL 2ND 9:00AM TO 4:00PM



**GO TO [godbyrealty.com](http://godbyrealty.com) and CLICK ON BURRIS ESTATE AUCTION FOR ALL DETAILS AND THE FULL TERMS AND CONDITIONS OF THIS AUCTION**



10% BUYERS PREMIUM ON ALL ITEMS SOLD. PREVIEW DATES FOR BOTH SITES WILL BE MAR 28 9AM TO 3PM & MAR 31 9AM TO 1PM. PICKUP FROM BOTH SITES WILL BE APRIL 1 & 2 FROM 9AM TO 4PM. IF YOU WISH TO PAY IN PERSON, YOU MUST COME TO THE GODBY AUCTION OFFICE AT 340 CLIFTY STREET in SOMERSET, KY AND GET YOUR PAID RECEIPT PRIOR TO LOADING YOUR ITEMS AT EITHER SITE.



**GODBY REALTY & AUCTION**  
340 CLIFTY ST SOMERSET, KY  
OFFICE 606-678-8189  
FAX 606-678-7356  
CELL 606-678-4865  
website at: [godbyrealty.com](http://godbyrealty.com)